

# Teloman

[www.teloman.com](http://www.teloman.com)



PRESENTATION • ART • GRAPHICS

# AGENCY BOOKS



The Agency range is used by international Photographers, Fashion Editors, Stylists, Hair & Make-Up artists worldwide. Handmade black padded Portfolio Books, made in either Hide Black Leather which will last endless Presentations or hard wearing matt black leather look Bonded Leather and Napella. All will not show heavy finger marks even when handled continuously.

Individual names can be embossed on each book in 42pt Americana typeface. The Agency First Book is for the professional display of Photographs and tear sheets. Padded front and back with pleated corners, the inside is fitted with back wings concealing interscrews. The lining is Buckingham Buckram and the rear cover has a vertical pocket for business cards. A maximum of 30 pages (60 sides) can be fitted. Accessories available include back and front page protectors and fillers to pad out spine when only 10 to 20 pages are being used. Black Padded Bags are available for 14 x 11", 16 x 12" and A3 books. Samples of Hide, Napella and Bonded Leather are available upon request.

Agency Books are made by hand in England.



14 x 11 Leather

## Leather Hide Agency Books

The ultimate presentation portfolio, bound in thick Leather Hide as used in luxury cars. Handmade with a beautifully rounded spine, a truly impressive presence that is enhanced with the passage of time. Available in Black, Cream, Blue or Brown and in the popular sizes of 14 x 11" and 16 x 12". Other Agency sizes can also be made in Leather Hide if required. Please ask us to quote.

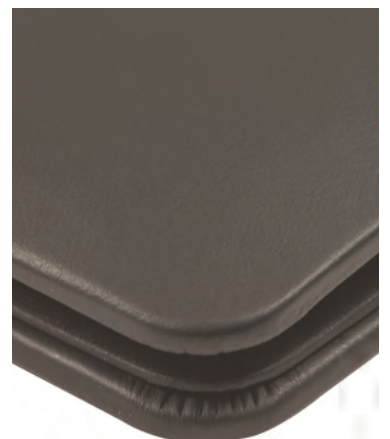
- AD.AFCH.1** 14 x 11"
- AD.AFCH.2** 16 x 12"
- AD.AFCH.3** A3
- AD.AFCH.4** A4 Plus  
(240mm x 320mm)
- AD.AFCH.6** A4 Plus  
Landscape (10 x 14")
- AD.AFCH.7** A3 PLUS  
Landscape (14 x 18")
- AD.AFCH.8** A4
- AD.AFCH.9** A3  
Landscape  
(420mm x 300mm)



Your name in 42pt Americana.



Interscrew System concealed on both sides.



Corner of Leather Hide book

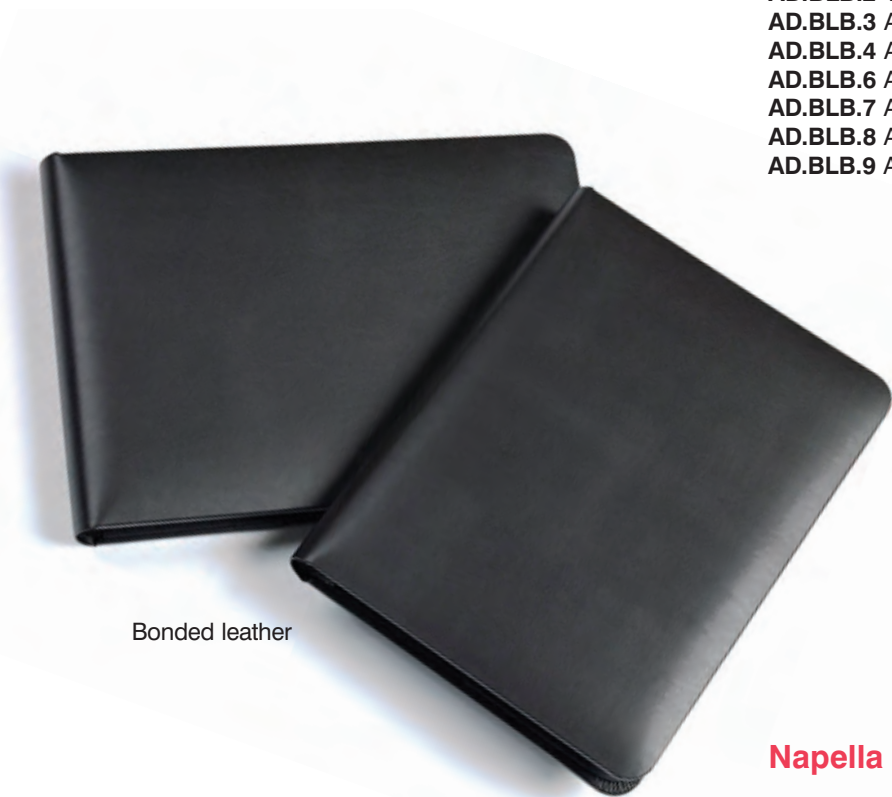


## Bonded Leather Books

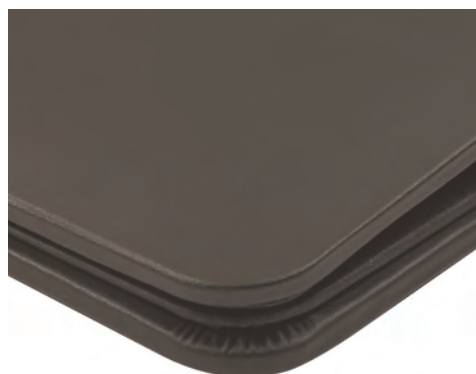
Bonded leather is recycled leather with lined Buckram woven cloth.

Available in matt black, brown, grey, red, green, burgundy and yellow.

- AD.BLB.1** 14 x 11"
- AD.BLB.2** 16 x 12"
- AD.BLB.3** A3 (425 x 295mm)
- AD.BLB.4** A4 PLUS (240 x 320mm)
- AD.BLB.6** A4 PLUS Landscape (10 x 14")
- AD.BLB.7** A3 PLUS Landscape (14 x 18")
- AD.BLB.8** A4
- AD.BLB.9** A3 Landscape (420 x 300mm) **(NEW)**



Bonded leather



Corner of Bonded leather

## Napella Agency Books

Napella is matt black with a slight pattern in the material. An embossed name really 'stands out' on Napella, creating an impressive presentation book. Handmade with that special 'Agency' rounded spine and available in a variety of colours and sizes.

- |                                    |  |
|------------------------------------|--|
| <b>AD.AFN.1</b> 14 x 11"           | <b>AD.AFN.5</b> A5 Ringbook                        |
| <b>AD.AFN.2</b> 16 x 12"           | <b>AD.AFN.6</b> A4 Landscape (10 x 14")            |
| <b>AD.AFN.3</b> A3 (12 x 17")      | <b>AD.AFN.7</b> A3 Landscape (14 x 18")            |
| <b>AD.AFN.4</b> A4 Plus (12 x 13") | <b>AD.AFN.8</b> A4 Napella                         |
|                                    | <b>AD.AFN.9</b> A3 Landscape (420 x 300mm) Napella |

Colours available: Black, Burgundy, Mustard, Brown, Red, Light Blue, Navy Blue, Mauve and Green.



A3 & A5 Napella books

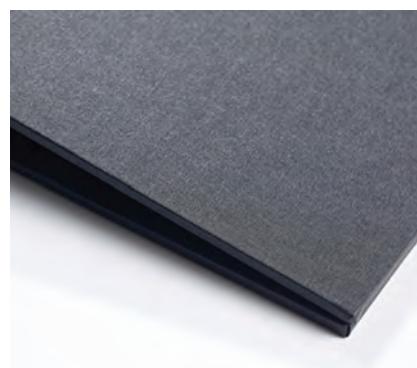


Corner of Napella book





14 x 11" Buckram book



Corner of Buckram book

## Buckram Agency Book

The Buckram book has a weave pattern in the matt black material. It has a square spine and corners. This smart, low cost Agency book is ideal for presenting photographs and artwork, and can be embossed.

- AD.BFN.1** 14 x 11"
- AD.BFN.4** A4 Plus (240 x 320mm)
- AD.BFN.3** A3
- AD.BFN.8** A4

## Agency Archival Pages / Sleeves

All with Acid Free Black Paper inserts, plus static to aid Photograph retention.

- AD.AFBS.1** 14 x 11" High Clarity Polyester
- AD.AFBS.2** 16 x 12" High Clarity Polyester
- AD.AFBS.3** A3 High Clarity Polyester
- AD.AFBS.4** A4 PLUS High Clarity Polyester
- AD.AFBS.5** A5 PVC (Non-archival)
- AD.AFBS.6** 10 x 14" Landscape High Clarity Polyester. A4
- AD.AFBS.7** 14 x 18" Landscape High Clarity Polyester. A3



## Agency Satchel

This Agency Satchel Portfolio is available in A1, A2 and A3.

- It comes with,
- Name card holder
- Adjustable padded shoulder strap
- Domed feet on base for protection
- Zippered pockets
- Deep 70mm capacity
- 2 year guarantee



Tech•Style Portfolios are made in England from the highest quality materials.



## Tech•Style **Astro**

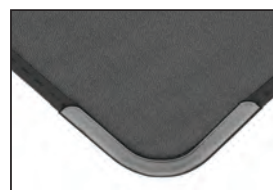
Tech•Style **Astro** portfolios have a matt textured finish with thick padding. There is a **Reinforced Bar** in the spine to support the weight of the sleeves and all have a **Shoulder Strap**. The A1 has a side handle.



10004 A4  
10003 A3  
10002 A2  
10001 A1

We suggest our 180 micron heavy gauge PVC with black paper to match this elegant portfolio.

AD.TS.A4 A4  
AD.TS.A3 A3  
AD.TS.A2 A2  
AD.TS.A1 A1



## Tech•Style **Presentation Portfolio**

Our most popular portfolio is made from weatherproof leather embossed vinyl with matching internal pockets.

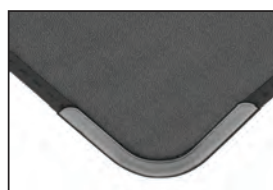
They have a **reinforcement** in the spine, **Double Cushioned** handle and **Burst Proof** sleeve rings. The A1 and A2 are fitted with a **Shoulder Strap**. There is a window on the spine for your name or company logo. The A1 has an additional side handle.



AD.TPA4BLK A4  
AD.TPA3BLK A3  
AD.TPA2BLK A2  
AD.TPA1BLK A1

We suggest our 180 micron **Heavy Gauge** PVC sleeves with black paper to match this elegant portfolio.

AD.TSA4 A4  
AD.TSA3 A3  
AD.TSA2 A2  
AD.TSA1 A1



## Tech•Style **Padded Leather Look**

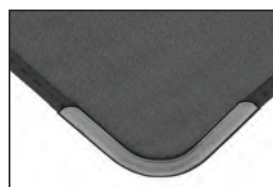
Tech•Style **Padded** leather look portfolios have a luxurious feel and appearance. They are extremely stylish, soft to touch and have matt black corners and handle fittings.



AC.PPP.A4 A4  
AC.PPP.A3 A3  
AC.PPP.A2 A2

We suggest our **Archival** polyester sleeves are the perfect match for this attractive portfolio in A4 & A3 sizes.

AD.ATS.A4 A4  
AD.ATS.A3 A3





Tech•Style Portfolios are made in England from the highest quality materials.



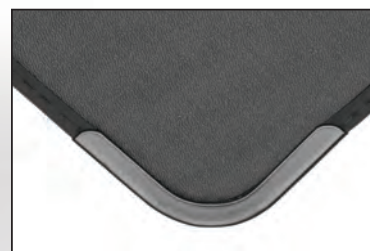
## Tech•Style **Presenter**

The Tech•Style **Presenter** has a leather grain finish, protective black corners and one internal pocket. They are fitted with **Burst Proof** sleeve rings and a **Double Cushioned** handle. The A1 has a side handle. The **Presenter** is a sensibly priced, hard-wearing presentation portfolio for students.

**AD.ECA4** A4  
**AD.ECA3** A3  
**AD.ECA2** A2  
**AD.ECA1** A1

Our 140 micron PVC sleeves are an ideal partner for this portfolio.

**AD.PVCA4** A4  
**AD.PVCA3** A3  
**AD.PVCA2** A2  
**AD.PVCA1** A1



## Tech•Style Folio **Carrying Cases**

A very strong weather proof portfolio with large rubber domes on the base to protect from wet pavements. Double zip.

**AC.FCCA3** A3  
**AC.FCCA2** A2  
**AC.FCCA1** A1



Tech•Style Portfolios are made in England from the highest quality materials.



## Matrix Portfolio

An exciting new addition to the range which combines simple lines of the presenter with the texture finish of the astro. This presentation case is finished with black fitting.

**Features:** textured finish, black fittings with simple lines, zip closure, ring binding mechanism, double cushioned handle, internal pockets and shoulder strap (only available in A1).

AD.SCA1 A1  
AD.SCA2 A2  
AD.SCA3 A3  
AD.SCA4 A4



This stylish fashionable carrying case comes in the same material as the art matrix portfolio.

**Features:** Very Strong and waterproof, rubber domes on the base to protect in the rain. Double zip. Side handle on A1.

AD.SCA1.CC A1  
AD.SCA2.CC A2  
AD.SCA3.CC A3







## Tech•Style Grande Presentation

Extra wide presentation portfolios to take 50-60 sleeves, have supporting shelf to take weight of sleeves.

**AD.GRA4** A4

**AD.GRA3** A3

**AD.GRA2** A2 - with shoulder strap

## Tech•Style Presentation Sleeves for Portfolios

Presentation sleeves in 180 micron or 140 micron in A1, A2, A3 and A4, all lined with black paper.

See price list for codes



## Tech•Style Grande Folio Carrying Cases

Double the width of the folio carrying case to carry more artwork.

**AD.GFCCA3** A3

**AD.GFCCA2** A2

**AD.GFCCA1** A1

## Tech•Style Easel Presentation Portfolio

The sleeve holders flap has a unique method of holding the portfolio in display position.

Landscape - **AD.ESLA4** A4

Portrait - **AD.ESPA4** A4

**AD.ESLA3** A3

**AD.ESPA3** A3

**AD.ESLA2** A2





## Tech•Style Artwork Polyrib Portfolios

Light, hard wearing fluted polyrib plastic portfolio with a big capacity (55cm wide). An economic transporter of artwork between home and college.

### Polyribs

**D.AWPA3** A3

**D.AWPA2** A2

**D.AWPA1** A1



## Tech•Style Design Folio

A portfolio with a clear front, card insert and carry handle. The perfect school project carrying case.

**DF.A3** A3

**DF.A2** A2

**DF.A1** A1

## Project Presentation Books

Available in A4 or A3 with 20 clear, removable polypropylene sleeves and A2 with 10 clear, removable polypropylene sleeves held in a flat mechanism, all sizes are available in Black, Mauve, Silver or Blue covers. The sleeves are available separately in packs of 20.

|                   |                    |                   |          |                   |          |
|-------------------|--------------------|-------------------|----------|-------------------|----------|
| <b>PPB.BLA.A4</b> | Black A4           | <b>PPB.BLA.A3</b> | Black A3 | <b>PPB.BLA.A2</b> | Black A2 |
| <b>PPB.BLU.A4</b> | Blue A4            | <b>PPB.BLU.A3</b> | Blue A3  | <b>PPB.BLU.A2</b> | Blue A2  |
| <b>PPB.MAU.A3</b> | Mauve A3           |                   |          |                   |          |
| <b>PPBS.A4</b>    | Pack of 20 sleeves |                   |          |                   |          |
| <b>PPBS.A3</b>    | Pack of 20 sleeves |                   |          |                   |          |
| <b>PPBS.A2</b>    | Pack of 10 sleeves |                   |          |                   |          |



## 4. Flip Files

Clear pocket on front, with 10 or 20 fixed pages. Ideal for presenting school / college projects.

|                   |                        |
|-------------------|------------------------|
| <b>AR.F5/10HS</b> | A5 Flip file 10 pocket |
| <b>AR.F4/10HS</b> | A4 Flip file 10 pocket |
| <b>AR.F4/20HS</b> | A4 Flip file 20 pocket |
| <b>AR.F3/10HS</b> | A3 Flip file 10 pocket |
| <b>AR.F3/20HS</b> | A3 Flip file 20 pocket |
| <b>AR.F2/10</b>   | A2 Flip file 10 pocket |
| <b>AR.F2/20</b>   | A2 Flip file 20 pocket |

## Tech•Style Black Card Folios

The traditional card folio. Hard to imagine, but until the 1970s this type of folio was all artists had to transport their artwork! Still popular today, the folio has 3 flaps and elastic retainers.

**20036** A4

**20034** A3

**20035** A2





## 1. Black Buckram Print Boxes lined with Archival Paper

These hand crafted archival quality image boxes are ideal for the display and long term storage of prints and artwork. The boxes have a removable lid and are lined in archival paper. They have an approximate internal depth of 15mm. These archival quality image boxes are ideal for the display and long term storage of prints and artwork. The boxes have a removable lid and are lined in archival paper.

|                   |    |
|-------------------|----|
| <b>BOXTHINA2C</b> | A2 |
| <b>BOXTHINA3C</b> | A3 |
| <b>BOXTHINA4C</b> | A4 |
| <b>BOXTHINA5C</b> | A5 |

available in different colours



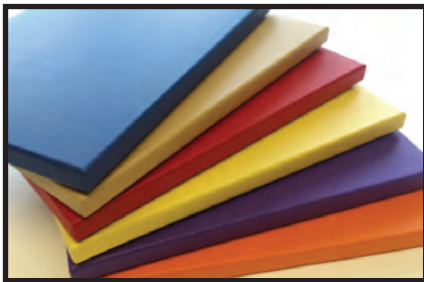
## 2. Black Buckram Archival Lined Photographic Boxes

Hand crafted and covered in black Buckram, this high quality storage and presentation box has been designed to safely hold artwork, photographs and more. The box opens flat which is a smart and convenient feature for the presentation of your work. boxes come in cream lined and black lined.

### SHALLOW BOXES CREAM AND BLACK LINED 37MM

|                 |                                 |
|-----------------|---------------------------------|
| <b>BOXA437C</b> | A4 Shallow box cream lined 37mm |
| <b>BOXA337C</b> | A3 Shallow box cream lined 37mm |
| <b>BOXA437B</b> | A4 Shallow box black lined 37mm |
| <b>BOXA337B</b> | A3 Shallow box black lined 37mm |

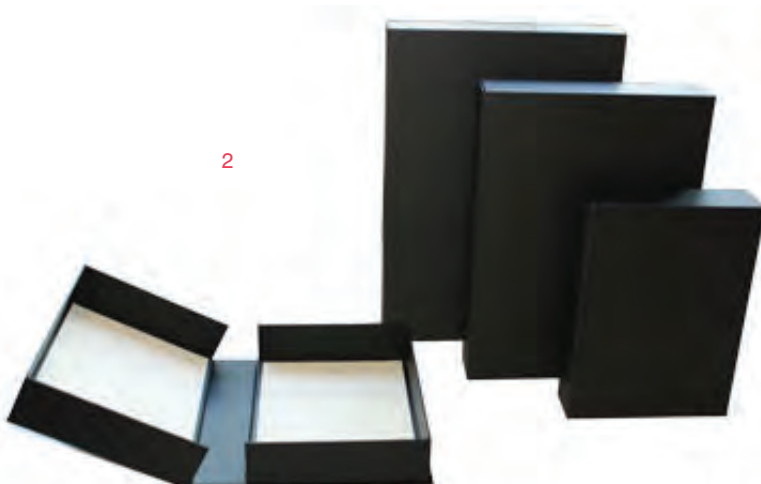
available in different colours



### DEEP BOXES CREAM AND BLACK LINED 65MM

|                 |                              |
|-----------------|------------------------------|
| <b>BOXA465C</b> | A4 Deep box cream lined 65mm |
| <b>BOXA365C</b> | A3 Deep box cream lined 65mm |
| <b>BOXA465B</b> | A4 Deep box black lined 65mm |
| <b>BOXA365B</b> | A3 Deep box black lined 65mm |

also available in other sizes and different colours







## 1. METAL 'EXECUTIVE' CASES

Hard shell ABS cases which hold artwork and foamboard firmly in place with pressure clamps. These cases afford extra protection in transit being reinforced with aluminium frame together with reinforcing bars behind the handle.

**AC.B1.A2** 600 x 435 x 75mm

**AC.B1.A1** 860 x 610 x 75mm - with shoulder strap

## 2. MH WAY TELESCOPIC TUBES

The telescopic ZOOM carry tube from Italy has been a companion to designers and architects. Ideal solution for professional and very popular in schools and universities. It's stylish, it locks into any given length with a simple twist. It's a discreet item taking care of everybody's work needs.

**AG.501B** Black 600-1400mm

**AG.501BT** Translucent 600-1400mm

## 3. Tech•Style ZOOM TELESCOPIC TUBES

A must for any artist, designer or architect, these sturdy drawing zoom tubes are perfect for transporting work and undeveloped photographic paper without risk of flashing the paper. There's not much these tubes can't handle! Both sizes come with a nylon shoulder strap for easy carrying, it locks and opens into any given length with a simple twist.

**AM900898 60** 115cm Black tube diameter 7.5cm ribbed

**AM900897 77** 126cm Black tube diameter 9.0cm

## 4. CARDBOARD POSTAL TUBES

**AJ.CT.2** B2 22" x 3" x 2.5mm thick

**AJ.CT.1** B1 31" x 3" x 2.5mm thick

**AJ.SCPTBA1** 686mm x 76mm x 2.5mm thick

**AJ.SCPTBA0** 940mm x 76mm x 2.5mm thick



1

## 1. trav•e•logue series

### SKETCH HANDBOOK JOURNAL

Hand-bound book cloth cover has just the right flexibility. Contains 128 pages of heavy weight buff drawing paper with a good tooth. Great for pen, ink, pencil and markers. Accepts light watercolour washes, without buckling and of course, its 100% acid free. Available in all sizes.

|        |                                    |
|--------|------------------------------------|
| 721211 | 5.5 x 3.5" Portrait BLACK          |
| 721221 | 3.5 x 5.5" Landscape BLACK         |
| 721331 | 5.5 x 5.5" Square BLACK            |
| 721421 | 8.25 x 5.5" Large Landscape BLACK  |
| 721411 | 5.5 x 8.25" Large Portrait BLACK   |
| 721212 | 5.5 x 3.5" Portrait BLUE           |
| 721222 | 3.5 x 5.5" Landscape BLUE          |
| 721332 | 5.5 x 5.5" Square BLUE             |
| 721422 | 8.25 x 5.5" Large Landscape BLUE   |
| 721412 | 5.5 x 8.25" Large Portrait BLUE    |
| 721213 | 5.5 x 3.5" Portrait CADMIUM GREEN  |
| 721223 | 3.5 x 5.5" Landscape CADMIUM GREEN |
| 721333 | 5.5 x 5.5" Square CADMIUM GREEN    |

|        |  |
|--------|--|
| 721423 | 8.25 x 5.5" Large Landscape CADMIUM GREEN  |
| 721413 | 5.5 x 8.25" Large Portrait CADMIUM GREEN   |
| 721214 | 5.5 x 3.5" Portrait VERMILLION RED         |
| 721224 | 3.5 x 5.5" Landscape VERMILLION RED        |
| 721334 | 5.5 x 5.5" Square VERMILLION RED           |
| 721424 | 8.25 x 5.5" Large Landscape VERMILLION RED |
| 721414 | 5.5 x 8.25" Large Portrait VERMILLION RED  |



5.25 x 8.25"



3.5 x 8.25"

## 2. trav•e•logue series NATURAL LINEN WATERCOLOR JOURNALS

Bound in linen, these watercolourists offer an attractive and practical option for travel painting, inside are 6 pages of soft white acid free 200gsm watercolour paper with a pleasing cold press finish.

|        |                              |
|--------|------------------------------|
| 769035 | 3.5 x 8.25" POCKET PANORAMA  |
| 769525 | 5.25 x 8.25" LARGE LANDSCAPE |
| 769855 | 8.25 x 5.25" LARGE PORTRAIT  |
| 769888 | 8.25 x 8.25" SQUARE          |
| 769105 | 10.5 x 8.25" GRAND PORTRAIT  |



10.5 x 8.25"



Available in these sizes also



2

## 3. FLEXI-SKETCH® SOFT-COVER SKETCH BOOKS

Flexi sketch contains 240 sheets of high quality acid free 90gsm sketch paper bound into a unique cover journal style sketch book, available in lots of fun colours.

|        |                           |
|--------|---------------------------|
| 959050 | 8 x 8" BUTTERNUT - SQUARE |
| 959030 | 6 x 9" CELERY - LANDSCAPE |
| 959020 | 6 x 6" MANDARIN - SQUARE  |
| 959040 | 9 x 6" SAND - PORTRAIT    |



3



# FLUID WATERCOLOUR PAPER



## High Quality at an Affordable Price

Fluid Watercolor Paper is crafted in a European mill which produced its first paper stock in 1618. The mill master craft small batches at slow speeds allowing for finer control of quality. This slow approach produces a sheet of great strength that shares much of the working integrity of more expensive mould-made papers.

## Selection that's a first for Watercolorists

Squares, landscapes, panoramas - never before has there been so much to choose from for watercolour painters. 16 unique blocks offer convenience and inspire new directions in creativity. Also available in other sizes

## Easy-Block - 15 Sheets glued on two edges.

Paint directly on the top sheet in the block. The glue along the two long edges will hold the sheet flat as you paint. When your painting is dry, slide a dull knife or letter opener in the open side under the top sheet. Release the glue along one edge and pull your painting free.

## HOT PRESS 300gsm 140lb

|        |        |        |          |
|--------|--------|--------|----------|
| 850046 | 4 x 6" | 850912 | 9 x 12"  |
| 850066 | 6 x 6" | 851212 | 12 x 12" |
| 850068 | 6 x 8" | 851216 | 12 x 16" |
| 850088 | 8 x 8" | 851620 | 16 x 20" |



## COLD PRESS 300gsm 140lb

|        |         |        |          |
|--------|---------|--------|----------|
| 880046 | 4 x 6"  | 880816 | 8 x 16"  |
| 880048 | 4 x 8"  | 880820 | 8 x 20"  |
| 880066 | 6 x 6"  | 881212 | 12 x 12" |
| 880068 | 6 x 8"  | 881216 | 12 x 16" |
| 880088 | 8 x 8"  | 881616 | 16 x 16" |
| 880612 | 6 x 12" | 881824 | 18 x 24" |
| 880618 | 6 x 18" |        |          |



## HANDBOOK PAPER CO.

Handbook Paper Co. is proud to introduce the newest member to our family of fine artist papers - Fluid 100 Watercolour Paper. Fluid 100 is a premium, archival cotton watercolour paper unlike any other. It is made by our European mill masters who combine traditional paper making techniques with modern technology. The results is a beautiful natural white sheet that is strong with a subtle yet pleasing surface texture. The gelatine sizing allows the artist greater control and produces brilliant intense colour. This is a paper both affordable and long lasting. Perfect for use with either wet or dry techniques.

## FLUID WATERCOLOUR BLOCKS COLD PRESS FINISH 640gsm 300lb

|        |          |                     |
|--------|----------|---------------------|
| 821202 | 4 x 6"   | 15 sheets per block |
| 821208 | 6 x 8"   | 15 sheets per block |
| 821210 | 8 x 8"   | 15 sheets per block |
| 821218 | 9 x 12"  | 15 sheets per block |
| 821216 | 12 x 16" | 15 sheets per block |
| 821234 | 16 x 20" | 15 sheets per block |

## FLUID WATERCOLOUR PAPER POCHETTES

|        |          |                    |
|--------|----------|--------------------|
| 821705 | 5 x 7"   | 15 sheets per pack |
| 821716 | 8 x 10"  | 12 sheets per pack |
| 821722 | 11 x 14" | 10 sheets per pack |



300 lb./640 gsm Cold Press

# FIELD SERIES ARTISTS JOURNALS



## FIELD SERIES

Handbook Field Series combines selected high quality artist papers with artist friendly sizes in hard cover, wire-bound formats. Available in journals or pads with distinct papers to meet a wide range of artist requirements. All made in the USA.

### 1. FIELD SERIES HOT PRESS

Bound with watercolour paper. A premium high alpha cellulose sheet in a subtle surface in a Hot Press Finish. 24 sheets / 48 pages, 140 lb / 300 gsm. Acid Free. Various styles available in the 2016 price list.



1

### 2. FIELD SERIES DRAWING JOURNAL

Drawing 160 is a sturdy, medium weight drawing paper that is perfect for all dry media, pen and ink and will accept a light wash. This paper is produced to ISO 9607 offering all the characteristics of permanence that artists require.

40 sheets / 80 pages / 100 lbs / 160 gsm. Acid free. Micro-perforated for full size.

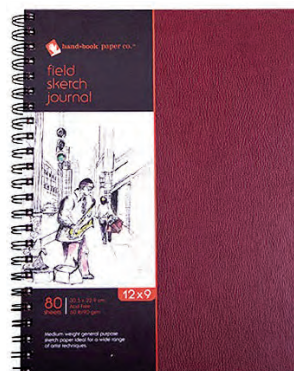


2

### 3. FIELD SERIES SKETCH BOOK

Bound with a superior medium weight general purpose sketch paper, Field Sketch has a slightly textured surface that is ideal for practising a wide range of techniques with dry media.

80 sheets / 160 pages / 60 lbs / 90 gsm. Acid free. Various styles available in the 2016 price list.



3

### 4. KONA CLASSIC FIELD JOURNAL

Kona premium toned artist journals are made from a unique blend of recycled coffee bean fibres and post consumer fibres. These long, strong jute fibres produce an ideal tooth and surface for toned artist paper. Acid free. Made in the USA.



4

**664192** 9 x 12" 36 sheets 88 lb / 130 gsm 100% recycled paper

**764088** 8 x 8" 36 sheets 88 lb / 130 gsm 100% recycled paper.

### 5. HB QUATTRO PADS

Rounded corners means Quattro will resist damage as you carry it. The specially laminated cover resists dirt or stains they come in lined, plain or gridded.

- 35530** 5.5 x 3.5" GRIDDED
- 35520** 5.5 x 3.5" LINED
- 35510** 5.5 x 3.5" PLAIN - ARTIST
- 35533** 5.5 x 8.5" GRIDDED
- 35534** 8.5 x 12" GRIDDED
- 60405** Black Leather QUATTRO Holder



5

# QUATTRO



# PENCIL CASES



## 1. CLASSIC LEATHER AND CANVAS PENCIL CASES

Available in soft top grain leather or our finely woven 16 oz. canvas. Durable, compact and sturdy, our pencil cases are a perfect storage option for artists on the go.

Available in saddle brown or black leather and 5 popular canvas colours.

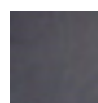
Cases are packaged in clear plastic peggable sleeves.

Available colours are:

### Leather:

Black

Saddle Brown

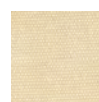


### Canvas:

Sage

Rose

Wheat



Steel Blue

Black



## LEATHER / CANVAS PENCIL CASES, SETS & BRUSH HOLDERS

### Brown

412480 Antique brown 48 Colour Compact

412720 Antique brown 72 Colour Compact

## LEATHER / CANVAS PENCIL CASES, SETS & BRUSH

### Black

214240 Black 24 Colour Compact

414480 Black 48 Colour Compact

414720 Black 72 Colour Compact

## PANEL STYLE CANVAS PENCIL CASES

255240 24 Ct case - Sage

256240 24 Ct case - Rose

257240 24 Ct case - Wheat

258240 24 Ct case - Steel Blue

259240 24 Ct case - Black

255480 48 Ct case - Sage

256480 48 Ct case - Rose

257480 48 Ct case - Wheat

258480 48 Ct case - Steel Blue

259480 48 Ct case - Black

259120 120 Ct case - Black



## 2. GLOBAL ART LEATHER PENCIL/ ACCESSORY CASE WITH ZIP

This beautiful pencil case is handmade made from genuine top grain leather. The original look and rich texture of the natural leather have been carefully preserved during the manufacturing process. This durable case offers a long lasting solution for organizing, storing, and transporting a variety of drawing materials.

This pencil case is embossed with the Global Art logo. Pencils are not included.

|       |                                   |            |
|-------|-----------------------------------|------------|
| PC/LB | Black Leather Pencil Case         | 10 x 2.25" |
| PC/SC | Antique Brown leather Pencil Case | 8 x 2.25"  |
| PC/SB | Black Leather Pencil Case         | 8 x 2.25"  |
| BH11  | Black Leather Pencil Case         | 11 x 2.25" |



# STRETCHED CANVAS



**100% Natural Cotton, Triple Primed, Stapled on back.  
For Oils, Acrylics and Gouache.**



## Cotton 380 g/m

### Stretched Canvas Classic Series 1.8cm deep -

|        |                          |         |       |
|--------|--------------------------|---------|-------|
| 597005 | Stretched Canvas Classic | 10x10cm | 1.8cm |
| 597010 | Stretched Canvas Classic | 13x18cm | 1.8cm |
| 597015 | Stretched Canvas Classic | 15x15cm | 1.8cm |
| 597020 | Stretched Canvas Classic | 18x24cm | 1.8cm |

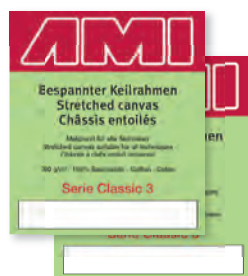
**Packed in 6s**



### Stretched Canvas Classic Series 3cm deep -

|        |                            |        |     |
|--------|----------------------------|--------|-----|
| 580905 | Stretched Canvas Classic 3 | 20x20  | 3cm |
| 580906 | Stretched Canvas Classic 3 | 20x50  | 3cm |
| 580907 | Stretched Canvas Classic 3 | 20x60  | 3cm |
| 580908 | Stretched Canvas Classic 3 | 20x80  | 3cm |
| 580927 | Stretched Canvas Classic 3 | 24x30  | 3cm |
| 580928 | Stretched Canvas Classic 3 | 30x30  | 3cm |
| 580929 | Stretched Canvas Classic 3 | 30x40  | 3cm |
| 580932 | Stretched Canvas Classic 3 | 30x80  | 3cm |
| 580934 | Stretched Canvas Classic 3 | 30x100 | 3cm |
| 580937 | Stretched Canvas Classic 3 | 40x40  | 3cm |
| 580938 | Stretched Canvas Classic 3 | 40x50  | 3cm |
| 580939 | Stretched Canvas Classic 3 | 40x60  | 3cm |
| 580940 | Stretched Canvas Classic 3 | 40x80  | 3cm |
| 580943 | Stretched Canvas Classic 3 | 50x50  | 3cm |
| 580944 | Stretched Canvas Classic 3 | 50x60  | 3cm |
| 580945 | Stretched Canvas Classic 3 | 50x70  | 3cm |

**Packed in 4s**



|        |                            |        |     |
|--------|----------------------------|--------|-----|
| 580948 | Stretched Canvas Classic 3 | 50x100 | 3cm |
| 580950 | Stretched Canvas Classic 3 | 60x60  | 3cm |
| 580952 | Stretched Canvas Classic 3 | 60x80  | 3cm |
| 580953 | Stretched Canvas Classic 3 | 60x90  | 3cm |
| 580955 | Stretched Canvas Classic 3 | 30x80  | 3cm |
| 580956 | Stretched Canvas Classic 3 | 60x120 | 3cm |
| 580958 | Stretched Canvas Classic 3 | 70x90  | 3cm |
| 580959 | Stretched Canvas Classic 3 | 70x100 | 3cm |
| 580960 | Stretched Canvas Classic 3 | 80x80  | 3cm |
| 580961 | Stretched Canvas Classic 3 | 80x100 | 3cm |
| 580962 | Stretched Canvas Classic 3 | 80x120 | 3cm |
| 580963 | Stretched Canvas Classic 3 | 90x90  | 3cm |

**Packed in 2s**



# PIGMA PENS FOR ARTISTS

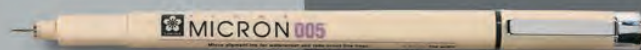
## PIGMA<sup>TM</sup> MICRON

PIGMA<sup>TM</sup> Micron pens come in 7 point sizes to create precise lines. For work or play, PIGMA<sup>TM</sup> Micron pens are loyally used by designers, scientists, archivists, architects, manga artists, cartoonists, illustrators, scrapbookers and craft hobbyists. Whether signing a contract or check, PIGMA<sup>TM</sup> ink provides a safe, permanent record.



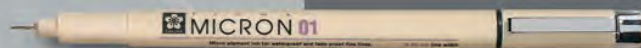
© Richey Beckett | www.richeybeckett.com

005 = 0.20 mm



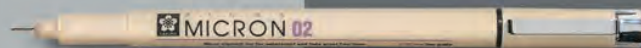
XSDK005#... 19 29 36 49

01 = 0.025 mm



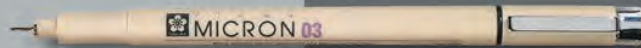
XSDK01#... 5 12 19 21 24  
29 36 49 117

02 = 0.30 mm



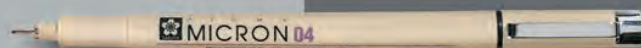
XSDK02#... 19 29 36 49

03 = 0.35 mm



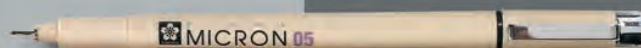
XSDK03#... 19 29 36 49

04 = 0.40 mm



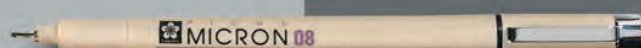
XSDK04#... 19 29 36 49

05 = 0.45 mm



XSDK05#... 3 5 12 19 21 22 24 29  
32 36 49 117 138 230 243

08 = 0.50 mm



XSDK08#... 19 29 36 49

## PIGMA<sup>TM</sup> BRUSH

PIGMA<sup>TM</sup> Brush pens have soft, brush tips for variable line widths that can be used for illustration, calligraphy, freehand graphics, rubber stamp art, decorative fabric art, hand written awards and certificates or for embellishing text.

Variable Width



XSDK-BR#... 5 12 19 21 24  
29 36 49 117

## PIGMA<sup>TM</sup> GRAPHIC

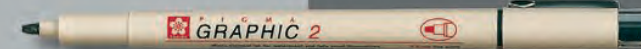
PIGMA<sup>TM</sup> Graphic pens have specialized, bullet and chiseled nibs for bold drawing applications such as graphic artwork, manga, cartoon illustrating, scrapbook art, tole painting, mapping or sketching.

Bullet 1 mm



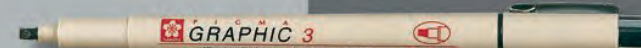
XSDK1#... 49

Chisel 2 mm



XSDK2#... 49

Chisel 3 mm



XSDK3#... 49

For more details please refer to our price list or ask us for a brochure

YOUR CHOICE TO PERFECTION





## 1. PIGMA MICRON DISPLAY 120 ASSORTED FINELINERS

MDXSDK120 The unique Pigma ink is suitable for filing purposes; archival-proof. The most popular black line widths 0,2 MM, 0,25 MM, 0,3 MM, 0,35 MM, 0,4 MM, 0,45 MM in one compact counterdisplay. Combined with the most popular colors of Pigma Micron 0,45 mm, Red, Green and Blue. Also extremely suitable for hobby applications like scrapbooking, Doodling, Journaling and Cardmaking.



1

## 2. SAKURA PIGMA BRUSH DISPLAY 120

MDXSDKBR120 The unique Pigma ink is suitable for filing purposes; archival-proof. Very suitable for hobby applications. Pigma Brush, available in 9 colours.



2

## 3. PIGMA MICRON WALLET 3 BLACK

PO(XSDK-3) Selection of the most popular black Pigma Micron pens. Sakura Pigma Color Technologies; Pigma was the first ink in the world to combine pigments and water. The fine tip makes this pen ideal for creating both technical and artistic drawings.

Set of 3 black Pigma Micron pens - 02, 04 and 08



3



4

## 4. PIGMA MICRON WALLET 6 BLACK

PO(XSDK-6) Set of 6 black Pigma Micron pens - 005, 01, 02, 03, 05 and 08 (0.2, 0.25, 0.3, 0.35, 0.45 and 0.5mm line widths respectively).

## 5. SAKURA PIGMA BRUSH WALLET 9

POXSDKBR9 The unique Pigma ink is suitable for filing purposes; archival-proof. Very suitable for hobby applications.

Pigma Brush, available in 9 colours

|             |              |              |
|-------------|--------------|--------------|
| 05#49 Black | 05#29 Green  | 05#5 Orange  |
| 05#36 Blue  | 05#12 Brown  | 05#21 Rose   |
| 05#19 Red   | 05#24 Purple | 05#117 Sepia |

## 6. PIGMA MICRON 05 WALLET 9 COLOURS

POXSDK059 Practical hanging display. The unique Pigma ink is suitable for filing purposes; archival-proof. Available in a variety of tip shapes and line widths, and in the most popular colours.

|             |              |              |
|-------------|--------------|--------------|
| 05#49 Black | 05#29 Green  | 05#5 Orange  |
| 05#36 Blue  | 05#12 Brown  | 05#21 Rose   |
| 05#19 Red   | 05#24 Purple | 05#117 Sepia |



5



6

## 7. PEN-TOUCH CALLIGRAPHER DISPLAY 36

CDPTC36 Compact presentation that clearly communicates the specific product applications. Simple to refill. With this marker you can give the impression of easy, professional calligraphy. The rich ink ensures beautiful results. The permanent ink is resistant to water, light and even chemicals. Can be used on many different types of paper and non-porous surfaces.

## 8. SAKURA PIGMA 36 PEN SET

CDXSDK36 36 micron pen set (Black)

Sakura Pigma (Archival) Micron Pen is. the first disposable technical pen using archival pigmented ink, Pigma Micron ink pen is selected for fine-point technical and artistic applications



7



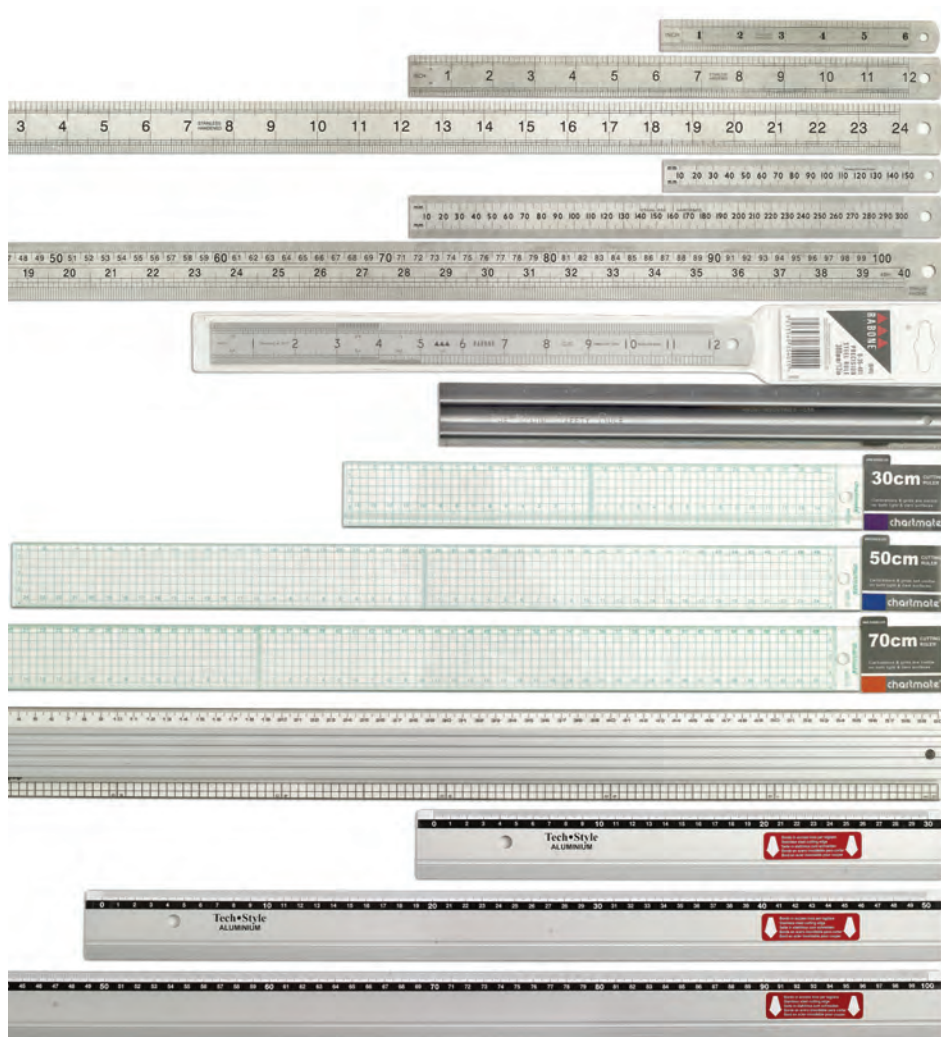
8

For our full range of arts and crafts pens please refer to our price list or ask us for our dedicated brochure





# STEEL RULES • RULERS



## 1. Tech•Style STAINLESS STEEL RULES

## 2. RABONE STAINLESS STEEL RULES

## 3. MAUN STEADY SAFETY RULE

## 4. CHARTMATE RULES

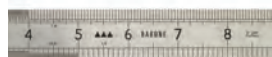
## 5. Tech•Style ANODISED ALUMINIUM SCALE

### 1. Tech•Style STAINLESS STEEL RULES



|                     |        |  |
|---------------------|--------|--|
| <b>J.196M/6</b>     | 6"     | Double sided 8ths, 16ths, 32nds, 64ths, 16ths, mm and 1/2mm          |
| <b>J.R196M/12</b>   | 12"    | Graduated as above   |
| <b>J.R196M/24</b>   | 24"    | Graduated as above   |
| <b>J.R39ME/1000</b> | 1000mm | Single sided 1/2mm, mm 1 edge. Inches 32nds, 64ths, 16ths other edge |
| <b>J.R300M/150</b>  | 150mm  | Single sided metric mm and 1/2mms                                    |
| <b>J.R300M/300</b>  | 300mm  | Single sided metric mm and 1/2mms                                    |

### 2. RABONE STAINLESS STEEL RULES



English and Metric Two Sides - Four Edges  
Subdivided inches in 16ths, 32nds, 64ths, 10ths, 30ths, 50ths, 100ths, mm, 1/2mm, figures every 10mm in mm.

|                  |             |               |
|------------------|-------------|---------------|
| <b>I.64R/150</b> | 150mm width | 19mm x 0.45mm |
| <b>I.64R/300</b> | 300mm width | 25mm x 1mm    |

### 3. MAUN STEADY SAFETY RULE



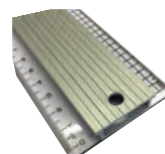
Gives full protection to the fingers when used with a knife. Can be used with both ink and pencil. Clearly marked in both English and metric scales. Bright anti-rust finish.

**M.1773/012** Size 12".

### 4. CHARTMATE RULES



1000mm with handle



**Acrylic** with Stainless Steel cutting edges  
Graduated mm's and CM's with graph for lining up artwork

|                   |                    |                            |
|-------------------|--------------------|----------------------------|
| <b>B.MS.30</b>    | 30cm               | Chartmate Rule             |
| <b>B.MS.50</b>    | 50cm               | Chartmate Rule             |
| <b>B.MS.70</b>    | 70cm               | Chartmate Rule             |
| <b>B.CR.600</b>   |                    | Chartmate Rule with handle |
| <b>B.CR.1000H</b> | 1000mm with handle |                            |

### 5. Tech•Style ANODISED ALUMINIUM SCALE RULES



Graduated in mm **Aluminium** with Stainless Steel Cutting Edge and Rubber Back

|                  |       |
|------------------|-------|
| <b>N.659/30</b>  | 30cm  |
| <b>N.659/50</b>  | 50cm  |
| <b>N.659/60</b>  | 60cm  |
| <b>N.659/100</b> | 100cm |

# CONVERSION SCALES

1



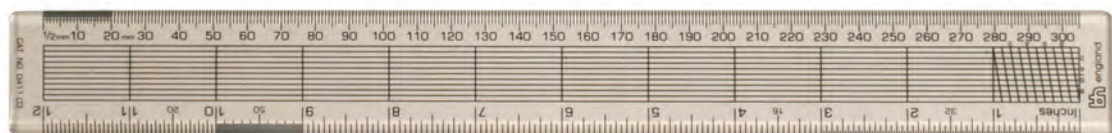
2



3



4



## SCALE RULES

### 1. RUMOLD PLASTIC TRIANGULAR SCALES IN HANGING PACKAGING 12"

|                      |   |
|----------------------|---|
| <b>AN.150-1/30</b>   | 1:20, 1:25, 1:50, 1:75, 1:100, 1:125<br>6" also available         |
| <b>AN.150-2/30</b>   | 1:20, 1:25, 1:33-1/3, 1:50, 1:75, 1:100                           |
| <b>AN.150-31/30</b>  | 3/32, 3/16, 1/8, 1/4, 3/8, 1/2, 3/4, 1, 1 1/2,<br>3" to ft, 1/16" |
| <b>AN.150-4/30</b>   | 1:100, 1:200, 1:250, 1:300, 1:400, 1:500<br>6" also available     |
| <b>AN.150-6/30</b>   | 1:500, 1:1000, 1:1250, 1:1500, 1:2000, 1:2500                     |
| <b>AN.150-9/30</b>   | 1:15, 1:20, 1:25, 1:33-1/3, 1:50, 1:100                           |
| <b>AN.150-DIN/30</b> | 1:2.5, 1:5, 1:10, 1:20, 1:50, 1:100<br>6" also available          |

### 2. VERULAM OVAL SECTION METRIC RANGE - FULLY DIVIDED 300MM OR 150MM

|                         |   |       |   |        |
|-------------------------|---|-------|---|--------|
| <b>H.2V/300 and 150</b> |   |       |   |        |
| 1:5                     | x | 1:50  | x | 1:100  |
| 1:20                    | x | 1:200 | x | 1:1000 |
| <b>H.3V/300 and 150</b> |   |       |   |        |
| 1:1                     | x | 1:100 | x | 1:200  |
| 1:5                     | x | 1:50  | x | 1:2500 |

### 3. R.I.B.A. CONVERSION SCALES 'A' AND 'B'

**H.44V/300 and 150**  
1:12 x 1:24 x 1:48 x 1:96  
open divided mm full size x inch full size 1/24th fully divided  
**H.45V/300 and 150**  
1:5ft x 1:20ft - 1:50ft x 1:100ft open divided  
We stock further metric & Imperial scale rules, see price list for details.

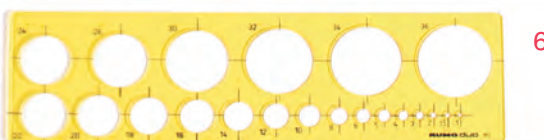
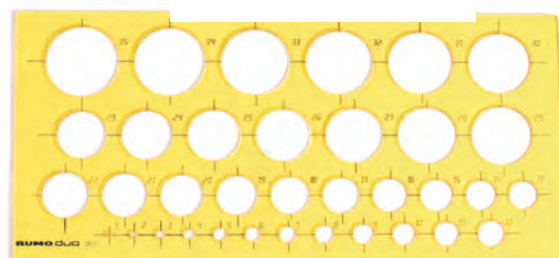
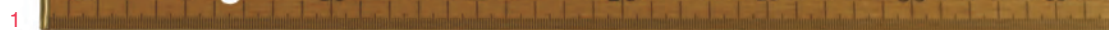
### 4. ACRYLIC RULERS

Range of good quality double sided bevelled acrylic rules, divided as follows: Divided in. to 16ths, 32nds, 10ths, 20ths, 50ths, x mm, 1/2mm. With lined centre grid.

|                  |              |
|------------------|--------------|
| <b>H.0411.03</b> | 300mm (12")  |
| <b>H.0411.04</b> | 375mm (15")  |
| <b>H.0411.05</b> | 450mm (18")  |
| <b>H.0411.07</b> | 600mm (24")  |
| <b>H.0411.10</b> | 1000mm (39") |

Also available with clear centres, see price list for details.





## 1. FISCO WOODEN METRE RULE WITH BRASS ENDS

AT.BRIME 1m/3ft  
Graduated in inches and 1/8" on one side, cm and mm on the reverse (Hanging Packaging).

## 2. Tech•Style HARDWOOD METRE RULE

Graduated 1 side only, marked inches and tenths top edge, centimetres and millimetres bottom edge. 32mm wide.  
J.HM/52/0 1m

## 3. FISCO SURVAYORS RODS

AT.SR2M 2m Multifold Metric only (not shown)  
AT.SR2ME 2m/6ft Multifold  
Graduated in inches and 1/8" on one side, cm and mm on the reverse.

## 4. UNIQUE FLEXICURVES

Designed to produce regular or irregular curves. Made of a PVC outer casing, with a core of lead, with regulating strips of steel, bevelled edges for pen or pencil work. Forms curves as small as 25mm.

|        |      |     |
|--------|------|-----|
| U.4012 | 30cm | 12" |
| U.4015 | 40cm | 15" |
| U.4018 | 50cm | 18" |
| U.4024 | 60cm | 24" |
| U.4036 | 90cm | 36" |

## 5. RUMOLD FRENCH CURVES

TS. DIGI Set French Curves Made in Smokey tinted plastic material.  
3 curves 13cm, 16cm, 31cm, with bevelled edges.  
TS.D70  
TS81104 Rumold set of French Curves Duo.

## 6. RUMOLD TEMPLATES

TS.D60 Circle Template Small  
TS.D61 Circle Template Large (not shown)

7. A.7151 Rumold Protractor set square

8. 760200 Ecobra Large Erasing Shield (Singly)  
137mm x 67mm stainless steel

## 1. UNIQUE ADJUSTABLE SET SQUARES

Are made from clear 3.2mm perspex with bevelled or square edges. They conform to ISO and BSI standards of accuracy and are extremely stable and resistant to scratching. The white solid octant is virtually unbreakable and the scale is divided in 1/2 degrees, fittings are aluminium. The size is measured on the longest edge.

Bevelled Edge 3.2mm perspex

**U.20CB1** 8"/20cm 23cm/9"

Arm length

**U.25CB1** 10"/25cm 30cm/12"

Arm length



1

## 2. UNIQUE ACRYLIC SET SQUARES

These 2.50mm set squares conform to the same ISO and BSI standards as above yet are only fractionally more in price than ejection moulded plastic set squares.

All set squares are packaged in transparent hanging packets

**U.2606B** 6" 15cm (30/60)

**U.2406B** 6" 15cm (45/90)

**U.2608B** 8" 20cm (30/60)

**U.2408B** 8" 20cm (45/90)

**U.2610B** 10" 25cm (30/60)

**U.2610B** 10" 25cm (45/90)

**U.2612B** 12" 30cm (30/60)

**U.2612B** 12" 30cm (45/90)



2

## 3. CHARTMATE SET SQUARES

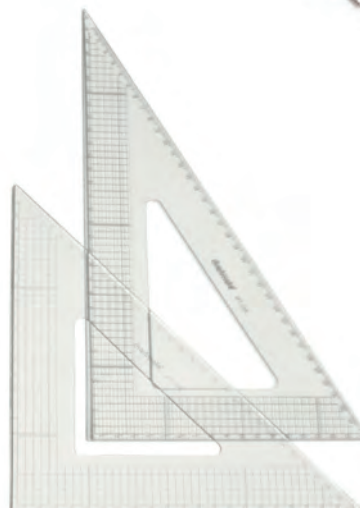
Graduated acrylic set squares with stainless steel edges. Chartmate set squares are graduated in centimeters and millimeters, have a 5cm grid for lining up your artwork and doublesided 'finger lifts'. They have a stainless steel cutting edge and the markings are marker solvent resistant. They are a 'must' for any studio!

**B.231MT.32A** 30cm x 60

**B.231MT.32B** 21cm x 45

**B.231MT.35A** 35cm x 60

**B.231MT.42B** 30cm x 45



3

## 4. CHARTMATE ADJUSTABLE SET SQUARE

Features: Ink edge with graduation high impact acrylic body 304 stainless steel hinge precision degree/ precision quality.

**B.AS-6G** 6"/15cm 6.5"/17cm Arm Length

**B.AS-8G** 8"/20cm 12"/30cm Arm length

**B.AS-10G** 10"/25cm 12"/30cm Arm length

**B.AS-12G** 12"/30cm 15"/37cm Arm Length



4





1

## 1. STANLEY TYLON TAPES

- 1-30686 Tylon Tapes 3m x 13mm
- 1-30696 Tylon Tapes 5m x 19mm
- 1-30-656 Tylon Tapes 8m x 25mm



2

## 2. POWERLOCK TAPES - STANLEY

- I.O-33-203 to I.O33-523 3m/10" Powerlock Tape
- I.O-33-158 to I.O-33-553 5m/16" Powerlock Tape
- I.O-33-443 to I.O-33-443 10m/33" Powerlock Tape



3

## 3. FISCO TAPES

- AT.TL3ME 3m/10' Tri-Lock Tape
- AT.TL5ME 5m/16' Tri-Lock Tape
- AT.UM3ME 3m/10' Uni Matic Tape

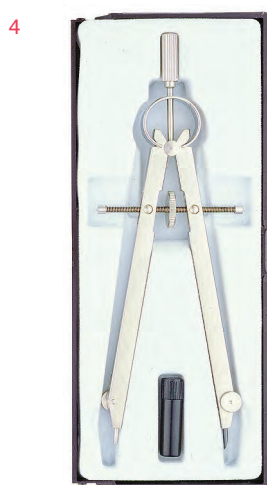
## 4. ECOBRA "HOBBY" MAGNIFYING GLASSES

Very low-priced but high-quality type of magnifier for the price-conscious user, with plastic frames and cranked handle, lenses of minearl glass, individually packed in cardboard box.

- A.810050 Lens Ø 50mm. Magnif. 3X
- A.810065 Lens Ø 65mm. Magnif. 3X
- A.810075 Lens Ø 75mm. Magnif. 2X
- A.810010 Lens Ø 100mm. Magnif. 2X
- A.810000 Base plate: 27.5 x 13.7 x 3.9 cm (L x W x H)  
content: ea. 3 x 810050, 810065, 810075, 810100



4



## ECOBRA INSTRUMENTS

Ecobra Instruments have been manufactured in Nurnberg West Germany for many decades and are firmly established World-wide as the finest and largest range of precision drawing instruments available today.

### 1. SPEEDMASTER GIANT BOWS

This is of our own, unique, design & construction and combines rapid setting and fine adjustment with automatic locking of the spindle at the chosen setting. All metal construction with spring loaded levers provides rapid setting and long life. Each SPEEDMASTER has two knee joints and 4mm spigots. Can be used with all popular technical pens.

**A.4241** Compass, pencil. Length: 170mm (6.8") Working range 320mm (12.5")  $\varnothing$

**A.4262** Compass, pencil, with lengthening bar. Length: 170mm (6.8"). Working range 560mm (22")  $\varnothing$

### 2. DUO-TEC GIANT BOWS

A well constructed giant bow with a long life at a very reasonable price.

**DT.421500** Masterbow - Knee joints with Quick Release

**DT.421510** As above with L Bar

### 3. MASTER GIANT BOW

The Master-Bow features an unbreakable hoop spring and a centre screw spindle with end stops; free from play. 3741 - 3728 - 3743 have two Knee joints and Spigot diameter is 4mm. Can be used with all popular technical pens.

**A.3741** Master-Bow pencil. Length 162mm (6") Working range 250mm (10")  $\varnothing$

**A.3728** Master-Bow pencil with lengthening bar. Length 162mm (6"). Working range 500mm (20")  $\varnothing$

**A.3743** Master-bow combination. 2 insert parts & lengthening bar. Working range 500mm (20")  $\varnothing$

**4. A.3754** Large spring bow pencil. Length 162mm (6.5"). Centre wheel for fine adjustment. Working range 280mm (11")  $\varnothing$

**5. A.42146** Inexpensive quick release giant bow with lengthening bar, two knee joints and detachable leg. All popular technical pens may be used.

All giant bows are supplied in blue boxes with transparent lids.

### 6. UNIVERSAL MASTERBOW

The Universal Master-Bow has an adaptor that will hold markers, technical pens and a Swann-Morton No. 3 handle to cut circles. Working range 210mm (8.25")

**A.60500** Supplied in plastic case

### 7. COMPASS ADAPTORS

**A.3566** 3.5mm technical pen adaptor

**A.6466** 4.0mm technical pen adaptor

**A.3723** Universal compass adaptor for both 3.5 and 4.0mm compasses

### 8. BEAM COMPASSES

Simple, inexpensive construction

**A.3836-0** Beam 50cm (20") Working range 980mm (38")  $\varnothing$   
Complete with pencil, pen & needle. Holding section. Beams are now graduated in cm and inches. (Not illustrated).

**A.3837-0** 75cm/30" Beam Complete with Pen/Pencil/Divider Sections

**A.3838-0** 96cm/38" Beam Complete with Pen/Pencil/Divider Sections

**A.3845-0** Beam only 75mm (30") Working range 1460mm (57")  $\varnothing$

**A.3835-0** Beam coupler

### 9. GEOMETRY COMPASSES

**375403** with centre wheel, silver, working range up to 360 mm  $\varnothing$ , lead box, transparent covered box





## ECOBRA NICKEL PLATED HAND GROUND RULING PENS

- 1. **A.3457** Mat nickel plated, width of lines 0.25 to 0.8mm
- 2. **A.3557** Mat nickel plated, width of lines 0.3 to 0.8mm



## PROPORTIONAL DIVIDERS

in lined Wood Cases

- 3. **A.3890** Proportional divider. Length 184mm (7.2"). Nickel silver with steel tips. Rack & pinion movement. Scales: lines, circles, squares, cubes, golden rule and  $\sqrt{2}$ .
- 4. **A.3891** Length 170mm (6.7"). Nickel silver with steel tips. Scales: Lines, circles and golden rule.



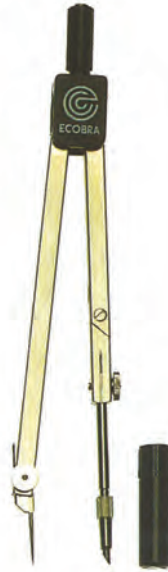
## ECOBRA 'K' SERIES.

The 'College' series, these instruments are of modern design and sound construction at economical prices. The large compasses each incorporate two asymmetrical knee joints and precision geared self centering legs. The spigot diameters are 3.5mm, and the surface finish is matt satin nickel. All popular technical pens may be used in conjunction with the compasses. Single instruments are in orange boxes with transparent lids.

- 5. **A.5130** Compass. Length 140mm (5.5") with knee joint. Working range 400mm (16").  $\emptyset$
- 6. **A.5132** Compass. Half set. Length 160mm (6.3"). Integral telescopic lengthening bar, lead box. Working range 560mm (22").  $\emptyset$
- 7. **A.5156** Plain divider. Length 152mm (6"). Opening range 230mm (9").
- 8. **A.5148** Spring bow pencil.



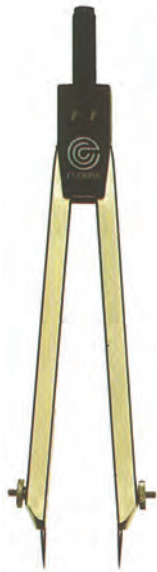
1



2



3



4



5



Ecobra Stands are available

## ECOBRA JUNIOR SERIES

The ECOBRA JUNIOR SERIES are designed for school use, a big improvement on the days when a school compass meant a clumsy non self-centering product with a loosely held blunt pencil. Individual instruments are in plastic wallets.

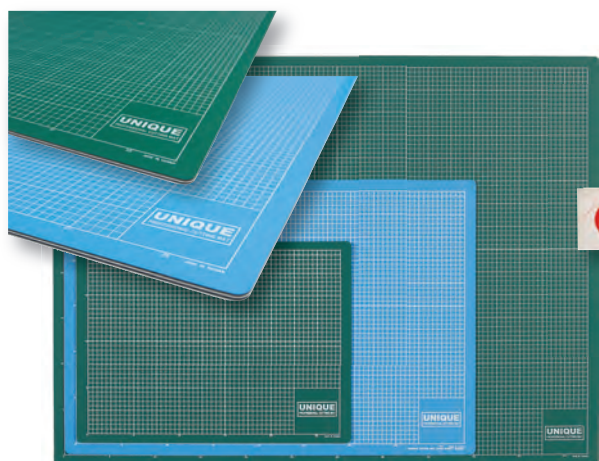
1. **A.61200** 4.75" Compass with detachable leg. Spare leads and needle.
2. **A.61210** 5.5" Compass with detachable leg. Spare leads and needle.
3. **A.61350** 5.5" Compass halfset with lengthening bar, leads and needles.
4. **A.61560** 5.5" Divider set in hard plastic case.

## CUTTING INSTRUMENTS

- A.4259** Cutting leg only with cutting blade. 4mm spigot.
5. **A.7020** Cutting Compass. Length 162mm (6"). Working range 280mm (11") ø



# CUTTING MATS • KNIVES



Cutting Mats

1



2

3

4

5



6

7

8

## 1. CUTTING MATS - TOP QUALITY, GREEN ONE SIDE, BLUE OTHER WITH GRID BOTH SIDES

Double sided with grid on one side for lining up artwork. The cutting mat has a semi-hard rubber like surface which allows the cutter to bite into it, yet the cut will heal. Therefore the blade cannot be deflected in the direction of the previous cut.

|       |    |                 |
|-------|----|-----------------|
| UNIA4 | A4 | 320 x 220 x 3mm |
| UNIA3 | A3 | 450 x 300 x 3mm |
| UNIA2 | A2 | 620 x 450 x 3mm |
| UNIA1 | A1 | 900 x 620 x 3mm |

## TRANSLUCENT CUTTING MATS

Ecobra Translucent cutting mats possess all the qualities of the green mats with the advantage that they can be used on a light box. The non slip surface has a grid for lining up transparencies.

|        |    |                 |
|--------|----|-----------------|
| 724530 | A3 | 450 x 300 x 3mm |
| 726045 | A2 | 620 x 450 x 3mm |
| 729060 | A1 | 900 x 620 x 3mm |

## STANLEY KNIVES

Die-cast handle. Supplied with four heavy duty blades and one hooked blade.

- 2. I.99E Retractable blade
- I.0-11-921 Heavy duty replacement blades (pack of 5)
- I.0-11-911 pack of 5 normal duty blades

- 3. I.199 Fixed blade

- 4. I.0-10-088 Lightweight Retractable Knife

## 5. SWANN-MORTON GRAPHIC ART KIT

- 0.GAS10A No.3 handle with 5 x 10a blades
- 0.GAS11 No.3 handle with 5 x 11 blades

## 6. SWANN-MORTON RETRACTAWAY

- 0.2800 Retractable Handle only - Sleeved
- 0.2801 Retractable Handle with 2 10a blades - carded

## 7. ECOBRA UTILITY KNIVES

- 770100 Small knife
- 770400 Large knife
- 770850 Small blades (Pk 12)
- 770900 Large blades (Pk 10)

- 8. 0.SMT Swann-Morton trimaway knife with 25a blade (Box 50)

## 9. SWANN-MORTON BLADES & HANDLES

Made from high quality Sheffield carbon steel, these surgical blades are recommended for graphics and craft uses.

Available as follows in boxes of 100.

No. 10, 10a, 11, 12, 15, 15a, 20, 21, 22, 22a, 23, 24, 25, 25a, 26 and 27.

Handles available No.3, 4, 7, 3L, 4L and 9.

Handles Nos 3, 7 and 9 for use with blades No. 10, 10a, 11, 12 and 15.

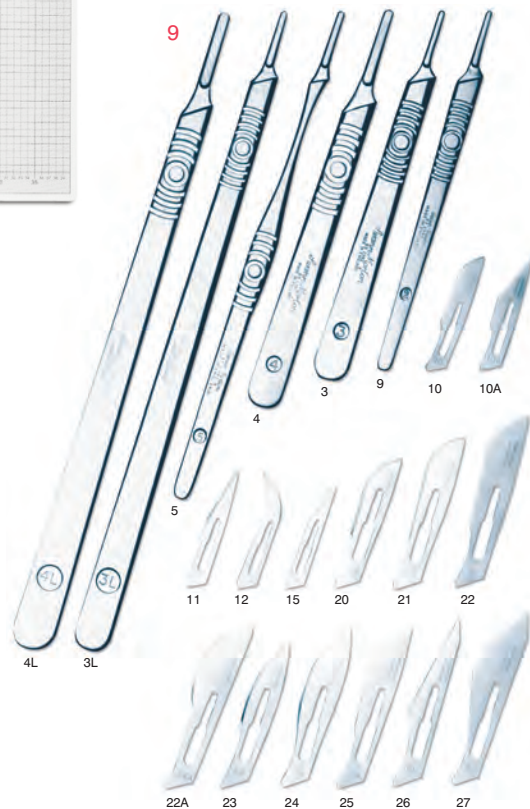
Handles No. 4 for use with blades No. 20, 21, 22, 22a, 24, 25, 26 and 27.

Please put 0 in front of reference when ordering.

Handles only available in boxes of 10.

## BLADE REMOVAL UNIT

- 10. 0.No.30 For replacing worn blades on a No3 and No4 S.M. Handle



10



# ADHESIVES • SPRAYMOUNT



## 1. 3M SPRAY MOUNT ADHESIVE

T.SMA.260G Large 400ml  
T.SMA.130G Small 200ml

## 2. 3M PHOTO MOUNT ADHESIVE

T.PMA.260G Large 400ml  
T.PMA.130G Small 200ml

## 3. 3M DISPLAY MOUNT ADHESIVE

T.DMA.260G Large 400ml

## 4. 3M CRAFTMOUNT ADHESIVE

T.CMP.400 Large 400ml - Permanent

## 5. PRITT STICK

X 1734 Pritt Stick - Medium 22g

## 6. COPYDEX ADHESIVE

X.1651 50ml Tubes - Pack 12  
X.1652 125ml Jars - Pack 12

## 7. EVO-STIK IMPACT ADHESIVE

347502 Small Tubes  
347908 Large Tubes

## 8. UHU ADHESIVES

All purpose is a perfect glue for everyday jobs around the house, school, office or handicrafts. Sticks paper, wood, cardboard, fabrics, leather, pottery, glass, china, marble, metal, felt and cork.

Y.UHU/12 UHU All Purpose Adhesive  
Tube 20ml Singles  
Y.UHU/13 UHU All Purpose Adhesive  
Tube 35ml Singles  
Y.UHU/2543 UHU All Purpose Adhesive  
Tube 125ml Singles

## 9. EVO-STIK EPOXY ADHESIVES

21358 **Rapid Epoxy** 2 x 15ml tube. Gives a strong bond in seconds. Ideal for use on ceramics, wood, chipboard, glass, metal and most hard plastics  
21389 **Control Epoxy** 2 x 15ml tube. Extra strong, long lasting bond. Repositionable for up to 2 hours. Ideal for large areas and assembling a number of components on metal, wood, masonry, ceramics, glass and most hard plastics

## 10. BLACK LABEL PREMIUM PVA

GL06 Premium PVA Medium Single 180ml (packed in 10s)  
GL600BK Premium PVA Medium Single 600ml  
GL05 Premium PVA Medium Single 1L Bottle  
GL03 Premium PVA Medium Single 5L Bottle

## 11. RED LABEL WASHABLE PVA

GL08 Washable PVA Adhesive Single 180ml (packed in 10s)  
GL600R Washable PVA Adhesive Single 600ml  
GL07 Washable PVA Adhesive Single 1L Bottle  
GL01 Washable PVA Adhesive Single 5L Bottle

## 12. MILLIPUT EPOXY PUTTY

- "The Epoxy Putty with a thousand uses"
- 2-part putty for porcelain restoration, modelling and sculpting, crafts, architectural models etc...

MEP01 YelloGrey (packed in 10s)  
MEP02 Terracotta (packed in 10s)  
MEP03 Silver Grey (packed in 10s)  
MEP04 Super Fine White (packed in 10s)  
MEP05 Black (packed in 10s)

## 13. EVOSTICK W EXTRA FAST WOOD ADHESIVE

715110 125ml Green Bottle





1



2



3



4



5



6



7



8



9



10



11



12



13



14

## BOSTIK GLUES

All purpose adhesive for household repairs, D.I.Y. tasks, craft and hobby. Dries in minutes.

- |          |                          |             |
|----------|--------------------------|-------------|
| 1. 80203 | 20ml Boxed All Purpose   | Packed 12's |
| 2. 80208 | 50ml Blister All Purpose | Packed 6's  |
| 3. 80207 | 20ml Blister All Purpose | Packed 6's  |
| 4. 80103 | Blu-Tack Handy           | Packed 12's |
| 5. 80108 | Blu-Tack Economy         | Packed 12's |
| 6. 80608 | Super Glu easy flow 5g   |             |
| 7. 80607 | Super Glu Liquid 3g      |             |

## BOSTIK GLU DOTS Acid Free

- |            |  |
|------------|--|
| 8. 8058280 | Glu Dots Removable Acid, lignin and non yellowing 4 sheets of 16 |
| 9. 805811  | Glu Dots Permanent Extra Strong Acid, Lignin free 4 sheets of 16 |
| 10. 805958 | Foam Pads small, Acid, Lignin Free 414 easy to peel sticky pads  |
| 11. 805941 | Tape Discs, Acid Free 25mm clear discs easy to use single sided  |
| 12. 805972 | Micro dots, Acid Free, double sided 5 sheets                     |
| 13. 805309 | Sticki Jumbo Pen, glue that works like a marker pen 36ml         |
| 14. 805965 | Sticki Tape double sided Acid Free 8.4mm x 12mtrs                |

## HANDY GLUE GUN

Hot melt with plug. For sticking PVC, Metal, Fabrics, Leather, Tiles and Brick with all purpose glue sticks. Beading, joints, mouldings and furniture with wood-working glue sticks.

- |           |                             |                |
|-----------|-----------------------------|----------------|
| 15. 80710 | All Purpose Glue Sticks/Hdy | Packed 6's     |
| 16. 91296 | Handy Glue Guns             | Packed Singles |

## DIY GLUE GUN

Hot melt with plug. Same uses as the Handy gun but for larger jobs.

- |           |                     |                |
|-----------|---------------------|----------------|
| 17. 80712 | DIY Glue Sticks/Std | Packed 6's     |
| 18. 91297 | DIY Glue Gun        | Packed Singles |



15



16



17



18



1



## 1. SCOTCH MAGIC TAPE

The matt surface of this tape is perfect for photographic reproduction and can be written on with drawing instruments.

|             |                         |
|-------------|-------------------------|
| T.810/12/33 | 12mm x 33m              |
| T.810/12/66 | 12mm x 66m (Packs of 2) |
| T.810/19/33 | 19mm x 33m              |
| T.810/19/66 | 19mm x 66m              |
| T.810/25/66 | 25mm x 66m              |



2



## 2. SCOTCH MAGIC II REPOSITIONABLE TAPE

This versatile tape has a unique "firm but removable" adhesive surface.

It can be repositioned over and over again without causing damage or leaving residue.

|             |            |
|-------------|------------|
| T.811/19/33 | 19mm x 33m |
| T.811/19/66 | 19mm x 66m |
| T.811/25/66 | 25mm x 66m |

## 3. 3M 101E VALUE MASKING TAPE

|              |            |
|--------------|------------|
| T.2363/19/50 | 19mm x 50m |
| T.2363/25/50 | 25mm x 50m |
| T.2363/38/50 | 38mm x 50m |
| T.2363/50/50 | 50mm x 50m |

## 4. 3M SCOTCH MASKING TAPE

The all purpose studio tape.

|              |            |
|--------------|------------|
| T.2364/25/50 | 25mm x 50m |
|--------------|------------|



3

## 5. 3M DOUBLE SIDED ARTIST TAPE

Used throughout the studio, this versatile tape has many mounting, holding and joining applications.

|            |            |
|------------|------------|
| T.Y9308/12 | 12mm x 33m |
| T.Y9308/19 | 19mm x 33m |
| T.Y9308/25 | 25mm x 33m |
| T.Y9308/50 | 50mm x 33m |

4



## 6. SCOTCH EASY TEAR

3M's brilliant new clear tape. Tears easily, exactly, when and where you want it to!

|         |            |
|---------|------------|
| ET.1930 | 19mm x 30m |
|---------|------------|

## 7. TESA MASKING TAPE

Economical masking tape.

|             |            |
|-------------|------------|
| 53123/12/50 | 12mm x 50m |
| 53123/18/50 | 18mm x 50m |
| 53123/24/50 | 24mm x 50m |
| 53123/36/50 | 36mm x 50m |
| 53123/48/50 | 48mm x 50m |

6



5



## 8. TECHSTYLE ACID FREE PAPER TAPE

5030 Acid free paper tape 25mm x 25mm

5031 Acid free double sided paper Tape 12mm x 25mm

7



8







## 1. LIGHTCRAFT LIGHTBOX

Available in A4 and A3 ideal for tracing designs and patterns for stencilling, embossing, scrap-booking, quilting, sewing, embroidery, calligraphy, lettering and displaying slides and transparencies.

### Light Box Features

Dimmable LED lighting

Consistent lighting across the whole panel face

Tracing area that comfortably takes A3 size

Energy efficient low heat emission

2m USB cable for use through computer/laptop

Mains UK/EU plug with USB slot.

**LC2003LED**

**LC2004LED**



## 4. HEADBAND MAGNIFIER

Headband magnifier with 4 lenses. Leaves your hands free to get on with the job! The kit includes a fully adjustable tough plastic headband, 4 precision ground interchangeable lenses in a plastic protection case and a battery operated adjustable spotlight with switch.

**POP1764**



## 5. HELPING HANDS MAGNIFIER

Helping hands with glass magnifier. Versatile device for holding items in position during assembly, soldering, painting etc. Ball joints permit adjustment to required positions. Has heavyweight base to avoid tipping and incorporates a glass magnifier for precision viewing.

**PCL2228.**

## 1. STUDENTS HARDWOOD TEE SQUARES

Polished hardwood

**J.SHTS.0** A2 650mm

**J.SHTS.1** A1 920mm

## 2. Tech•Style ANODIZED ALUMINIUM TEE SQUARES

Metal parallel bladed tee squares, suitable for either left or right handed use. Plus has inking lip for technical pen work.

**N.721/A2** A2 650mm

**N.721/A1** A1 920mm

**N.721/A0** A0 1270mm

## 3. MARKSMAN DRAWING BOARD CLIPS

Marksman spring steel drawing board clips will ensure drawings being firmly gripped to the edge of the board.

**J.DBC.2** Packed loose. Box 100.

## 4. ECOBRA DUSTING BRUSH

**760100** 22cm Horse hair. Polished Handle

## 5. WOOD SKETCHING BOARDS

A light inexpensive plywood board suitable for sketching on the knee (A3) or using in conjunction with our 'Burstead' easels.

(A3, A2 or A1)

**AK.SBWA3** 480 x 400mm

**AK.SBWA2** 610 x 480mm

**AK.SBWA1** 870 x 610mm

Wood sketching boards are seven layer 9mm birch ply and are water resistant. They have a hard fine surface and are ideal for sketching or watercolour.



1



2

3



4



5





# DRAWING BOARDS



1



## 1. TRUELINE/SHERBORNE

A combination of the Trueline unit and Sherborne backstand. The stand is of all steel construction and designed for use with A1 and A2 boards with four angle settings.

**0564.11** A2 Trueline/Sherborne Unit

**0564.12** A1 Trueline/Sherborne Unit

Incorporates a handy pencil tray

Dimensions: Width: 65cm

Height: 47cm

Depth: 1.5cm

Weight: 5.9kg

## 2. CHALLENGE UNIT

This portable board unit is a design hybrid of the Trueline unit with a simple cross-wire parallel motion and graduated straightedge. Supplied with flip leg/carrying handle stand.

**0524.50** A3 Challenge Unit

**0524.51** A2 Challenge Unit

**0524.52** A1 Challenge Unit

See our price list for all B.H. products stocked

Designed primarily for students and DIY/hobby enthusiasts

Dimensions: Width: 47cm

Height: 36cm

Depth: 1.5cm

Weight: 2.2kg



2



# AIRBRUSHES



## 1. MODEL 250-3

The 250-3 is a basic spray gun that is very easy to use. It will spray a fine line from 19mm to 50mm and is ideal for backgrounds, fogging, making textures and working with stencils, in fact, all jobs that need a simple, yet effective spray. The 250-3 contains all you need to start spraying, i.e. jars, hose, regulator, propellant and instruction book.

**Z.250-3** Presentation Set

## 2. MODEL 250-2

Basic spray gun as above with hose, regulator and jar on blister card.

**Z.250/2** Blister Card

## 3. MODEL 350/9

The 350 Airbrush as above with hose, regulator, ¼ oz Jar and adaptor packed on display blister card.

**Z.350/9** Blister Card



2



3



## 4. MODEL 200-3

The 200-3 single air action air brush will produce the same professional spray as the more expensive air brushes. The 200-3 is supplied with a medium head (1L) which will spray a line 1.5mm to 38mm. Also available is a fine head (Ref: XF pencil line width to 25.4mm) and a HD head spraying a line width from 3.2mm to 50.8mm. The 200-3 set is complete with 3 jars, hose, spanner, regulator and propellant, and instruction book.

**Z.200-3** Presentation Set



**5.** The SprayCraft All-Purpose Airbrush Kit with 3 spray tips blister card from the Model Airbrushes range provides a high quality spray gun capable of varied spray widths by using the different nozzles provided in the kit. Great for use with most paints, acrylics, enamels, inks and lacquers.

**SP20K** NEW Spraycraft in box set.



All Purpose Airbrush. Simple to use, easy to maintain, with 3 quick change spraying tips for fine, medium or broad strokes. Great for use with most paints, acrylics, enamels, inks and lacquers.

**SP20** NEW Spraycraft with 3 spary tips. Blister card.



**6.** The SprayCraft Classic Multi-Purpose Airbrush Kit from the Model Airbrushes range provides a high quality multi-purpose internal mix dual-action airbrush that gives you complete control over the paint and air flow, ideal for both fine detail work or rapid overall coverage. Great for use with most paints, acrylics, enamels, inks and lacquers.

**SP50K** NEW Spraycraft in box set.





## 1. SPRAYCRAFT AIR BRUSH PROPELLANT

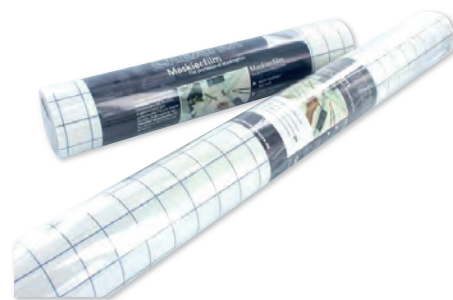
**Z.P250**  
**Z.P500**  
**Z.M-35**

Small 250ml (Pk 12)  
Medium 500ml (Pk 12)  
Large 750ml (Pk 12)



## 2. SPRAYCRAFT AIR BRUSH CLEANER

Air Brush Cleaner in Aerosol can. The ideal air source for short or intermittent usage with all types and makes of airbrush.  
**Z.SPRAYAWAY**



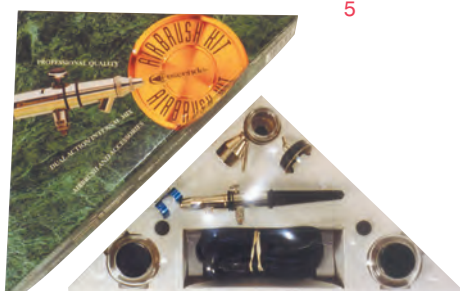
## 3. MASKING FILM

**Z.2382** 60cmx4m Matt



## 4. SPRAYCRAFT PRIMARY COLOUR SET

6 Liquid Acrylic Colours  
Includes: Red, White, Blue, Yellow, Green, Black, White  
For metals, glass, paper, canvas, wood, leather, fabrics, ceramics & clay  
Can be mixed for layering & glazing on large surfaces & painting miniatures  
**SP0601**



## 5. CRESCENDO AIR BRUSH

The 'Crescendo' has a new tip and spray regulator for easier cleaning and maintenance. It sprays properly reduced acrylics, acrylic enamels, lacquers, gouaches, fabric colours, inks, dyes, ceramic colours and glazes, watercolours and all airbrush colours. Set includes two 2oz jars, one 3/4oz jar, one jar adaptor, one 1/4oz colour cup, 8ft braided air hose, 1/4" compressor adaptor. One each fine, medium and large paint tip, needle, spray regulator and brush holder and instruction manual.

**Z.175-7**



## 6. AC-27 COMPRESSOR

55psi. A robust, well built compressor which is well suited to the entire range of Badger airbrushes. Equipped with pressure gauge, airbrush holder, pressure adjustable. Air flow 10LPM. Weight 3kgs.

Size L 15cm x W 15.5cm x H 18cm.  
**Z.AC-27**



## 7. TC-501 COMPRESSOR

An economical big brother to the above. 80psi. Automatic with pressure gauge, moisture trap, pressure adjustable. Air flow 26LPM. Weight 5.5kgs. Size L 30cm x W 14cm x H 22 cm.

**Z.TC-501**



## 1. TREASURE GOLD

Non Tarnishing Wax Gilt for decorating or restoring gold leaf. Polish to a permanent lustre.

|           |             |
|-----------|-------------|
| AG.TG.BRA | Brass       |
| AG.TG.CLA | Classic     |
| AG.TG.COP | Copper      |
| AG.TG.FLO | Florentine  |
| AG.TG.PEW | Pewter      |
| AG.TG.REN | Renaissance |
| AG.TG.SIL | Silver      |
| AG.TG.WHI | White Fire  |

## 2. LIQUID LEAF

Brush on gold paint for all surfaces

|           |             |
|-----------|-------------|
| AG.LL.BRA | Brass       |
| AG.LL.CLA | Classic     |
| AG.LL.COP | Copper      |
| AG.LL.FLO | Florentine  |
| AG.LL.PEW | Pewter      |
| AG.LL.REN | Renaissance |
| AG.LL.SIL | Silver      |
| AG.LL.WHI | White Fire  |

3. We also have **TREASURE JEWELS** available in all 12 Metallic Colours.

## 4. LIQUID LEAF BRUSH BATH

Paint thinner formulated for the thinning or cleaning of Liquid Leaf.

AG.LL.BRUSH 60ml

## 5. TREASURE SEALER

Treasure Sealer is specifically made as a clear protective coating for Treasure Gold and Liquid Leaf. Suitable for sealing and protecting. It is waterproof, clear and non-yellowing and dries in 30mins. Can be cleaned and thinned with alcohol.

AG.TG.SEAL

## 6. MASTERS BRUSH CLEANER

Cleans and restores brushes even when clogged for a year! For oil, acrylic or watercolour. Use with water,

|         |                         |
|---------|-------------------------|
| AV.MBC  | 2.5oz pot (Packed 12's) |
| AV.MBC1 | 1oz pot                 |

## 7. KINGSIZE MASTERS BRUSH CLEANER

King size 24oz pot of brush cleaner for studio or classroom use.

AV.MBCSC

## 8. MASTERS HAND SOAP

Removes all paint from hands without the use of harmful white spirit, thinners, etc. which dry up the skin. Non-toxic. Refreshing minty smell. Also removes paint stains from clothing.

our. Use with water,  
AV.MHS

## 9. READY MIXED WATER-BASED PAINT

Liquid Poster Paint 300mls

|        |                      |
|--------|----------------------|
| UV.YEL | Yellow UV Glow Paint |
| UV.PIN | Pink UV Glow Paint   |
| UV.GRE | Green UV Glow Paint  |
| UV.BLU | Blue UV Glow Paint   |
| UV.SCA | Red UV Glow Paint    |
| UV.ORA | Orange UV Glow Paint |

## 10. RICHARD HAXWORTH PENS

Original handmade Reed pens for calligraphy and ink drawing. Standard series.

|         |  |
|---------|--|
| RHS.B4  | Broad                                    |
| RHS.M3  | Medium                                   |
| RHS.F2  | Fine                                     |
| RHS.A1  | Art                                      |
| RHR.S   | Reservoirs for above                     |
| RHAD.B7 | Broad-Arundo Donax Reed                  |
| RHAD.M6 | Medium Arundo Donax Reed                 |
| RHAD.F5 | Fine Arundo Donax Reed                   |
| RH.INK  | Permanent Gallink - Phials               |
| RH.INKS | Permanent Gallink - Large Bottles Phials |



1



## 1. RC18 VARIABLE SPEED ROTARY TOOL KIT

Mini 12v Variable Speed Rotary Tool + transformer..

In-built variable speed control 8000-18000 rpm.

4m total length of cables

60 various accessories

Instructions

Handy aluminium carry and storage case

2



## 2. RC12 MINI ROTARY TOOL KIT

Single speed 12 volt rotary tool with plug-in transformer - 18,000 rpm,

2.4m total length of cable. 44 various accessories and instructions.

Supplied in an attractive aluminium carry and storage case - colour sticker on case, strong perspex window - excellent presentation.

3



## 3. 50 PIECE CRAFT KNIFE SET WITH CUTTING MAT

A complete set of knives, blades & tools.

- Includes handles, blades, cutting guide, planer & sharpening stone
- Ideal for craft, hobby and smaller DIY tasks
- Supplied with attractive aluminium carry & storage case

Includes FREE A5 self-healing cutting mat.

**PKN1050** 50 piece craft knife set

## HEAVY DUTY TWEEZERS

Heavy duty - length 175mm.

- 1. **PTW5350** Straight Tips
- PTW5351** Curved Tips

## STAINLESS STEEL TWEEZERS

Anti-acid, anti-magnetic, large range - various sizes.

- 2. **PTW2185/7** 115mm, extra fine, curved points
- 3. **PTW2185/AA** 115mm, strong, fine points

## 4. MINISNIP

Versatile precision scissors. Comfortable to use. Built-in spring return.  
**PSC1002**

## 5. LOCKING FORCEPS 150mm

Originally made for use by surgeons, locking forceps are now used extensively by model builders, jewellers, miniaturists, electronics hobbyists, anglers, cake decorators and even flower arrangers. Quality box joint construction, stainless steel.

**PCL5045** Straight

## 6. RIFFLER FILE SET (10)

Set of 10 useful shape double ended rifflers. Useful for reaching places not accessible with ordinary needle files.

**PFL6003**

## 7. UNIVERSAL NEEDLE FILE HANDLE

Beautifully turned in hardwood, this handle fits neatly in the hand and has that wonderful feel of quality about it. The collet will accept all regular needle files.

**PFL2211**

## 8. BUDGET NEEDLE FILE SET (10)

Set of ten assorted imported needle files in a handy wallet. Medium cut, these files represent very good value for money but are not to be confused with quality Swiss or EC files.

**PFL6001**

1



2



3



4



5



6



7



8





# MODEL CRAFT TOOLS FOR THE CRAFTER



## 1. WATCHMAKERS STYLE HAMMER

Also known as a Swiss type hammer, this perfectly balanced miniature cross pein hammer is particularly useful for striking blows in awkward areas.

**PHA5111**

## 2. SET OF THREE STAINLESS STEEL PROBES

A selection of three quality stainless steel probes in a useful storage wallet.

**PDT5197/3**

## 3. SET OF SIX STAINLESS STEEL CARVERS

A selection of six quality stainless steel carvers in a useful storage wallet.

**PDT5200**

## PRECISION CALIPERS & DIVIDERS

Made from high quality tool steel. Retail packed.

**4. PDV6711/3** Dividers 3"/75mm.

Micrometer style adjustment

**5. PDV6712/3** Outside Calipers 3"/75mm.  
Micrometer style adjustment

## 6. ARCHIMEDEAN DRILL STOCK

Archimedean drill holders are spiral type hand drills which turn by pushing the knurled centre ring up and down. The drill is also available with a spring for assisted return. Ideal for all small drill bits up to 1mm. Ideal for precision drilling.

**PDR1126**

With spring return

## 7. MINIATURE ROUND-NOSE PLIERS

Smooth jaws, stainless steel, comfortable grips.

**PPL5701**

## 8. MINIATURE FLAT-NOSE PLIERS

Smooth jaws, stainless steel, comfortable grips.

**PPL5702**

## 9. MINIATURE SIDE CUTTERS

Stainless steel, comfortable grips.

**PPL5703**



## 10. 3 x 1ml Syringes

General purpose syringes. Ideal for the application of small liquid quantities. Supplied in packs of 3.

**POL1001/3**

## 11. 3 x 5ml Syringes

General purpose syringes. Ideal for the application of small liquid quantities. Supplied in packs of 3.

**POL1005/3**

## 12. 12ml Curved Syringe Including Tip

General purpose syringe with curved nozzle. Ideal for liquid application in hard to reach areas. Multitude of uses.

**POL1012/C**



# PRESENTATION • ART • GRAPHICS



## Index to Sections

|   |              |   |              |
|---|--------------|---|--------------|
| <b>Portfolios</b>                             | <b>1-8</b>   | <b>Set Squares . Tapes . Magnifiers</b> | <b>21-22</b> |
| <b>Agency Photographic Boxes</b>              | <b>9</b>     | <b>Ecobra Instruments</b>               | <b>23-25</b> |
| <b>Zoom . Postal Tubes</b>                    | <b>10</b>    | <b>Cutting Mat . Knives</b>             | <b>26</b>    |
| <b>Journals / Watercolours / Field Series</b> | <b>11-13</b> | <b>Adhesives . Spraymount . Tapes</b>   | <b>27-29</b> |
| <b>Pencil Cases</b>                           | <b>14</b>    | <b>Lightboxes . Magnifiers</b>          | <b>30</b>    |
| <b>Stretch Canvas</b>                         | <b>15</b>    | <b>T Squares . Drawing Boards</b>       | <b>31-32</b> |
| <b>Pigma Pens / Wallets / Displays</b>        | <b>16-17</b> | <b>Airbrushes</b>                       | <b>33-34</b> |
| <b>Steel Rules . Conversion Scales</b>        | <b>18-19</b> | <b>Gilt Paint . Art Sundries</b>        | <b>35</b>    |
| <b>Drawing Aids . Templates</b>               | <b>20</b>    | <b>Model Craft Kits</b>                 | <b>37-38</b> |

## Technical Sales – Sales Team

|                            |                      |              |               |
|----------------------------|----------------------|--------------|---------------|
| <b>London / South East</b> | <b>Geoff Redhead</b> | <b>07836</b> | <b>357535</b> |
| <b>West Country</b>        | <b>Wayne French</b>  | <b>07860</b> | <b>208309</b> |
| <b>North of England</b>    | <b>Neil Ward</b>     | <b>07809</b> | <b>544690</b> |
| <b>East Anglia</b>         | <b>Main Office</b>   | <b>01480</b> | <b>494747</b> |
| <b>Scotland</b>            | <b>Malcolm Rigby</b> | <b>07885</b> | <b>136636</b> |

Teloman Products, Harding Way, St.Ives, Cambridgeshire PE27 3WR

### Terms and Conditions of Business

1. All prices are subject to revision without notice. 2. Settlement terms are 30 days. 3. VAT is applicable to all goods and services at the rate ruling at the time of delivery. 4. Orders over £150.00 nett value excluding VAT are Carriage paid, except Drawing Boards and T Squares, which are subject to part Carriage and Packing charge. 5. Orders under £150.00 nett value excluding VAT are subject to Carriage and Packing charge at cost. 6. Claims on account of non-arrival goods, shortage or damage must be made in writing within 10 days from date of invoice otherwise claims cannot be entertained. 7. Returned Goods: Goods may be returned subject to the following conditions: a) Goods will only be credited if permission in writing is received from us. A full credit will be given - less 10% handling charge. b) If incorrectly supplied by us, full credit will be given including credit for return carriage.



**Teloman Products, Harding Way, St.Ives, Cambridgeshire PE27 3WR**

**Tel. 01480 494747 Fax. 01480 496114**

**email: [ts@teloman.com](mailto:ts@teloman.com)**